

**Now is the time
to build ...**

“To add a library to a house is to give that house a soul.” - Cicero

*“If we encounter a man of great intellect, we should ask him what books he reads.”
- Ralph Waldo Emerson*

“Knowing I loved my books, he furnished me, from mine own library with volumes that I prize above my dukedom.” - Shakespeare

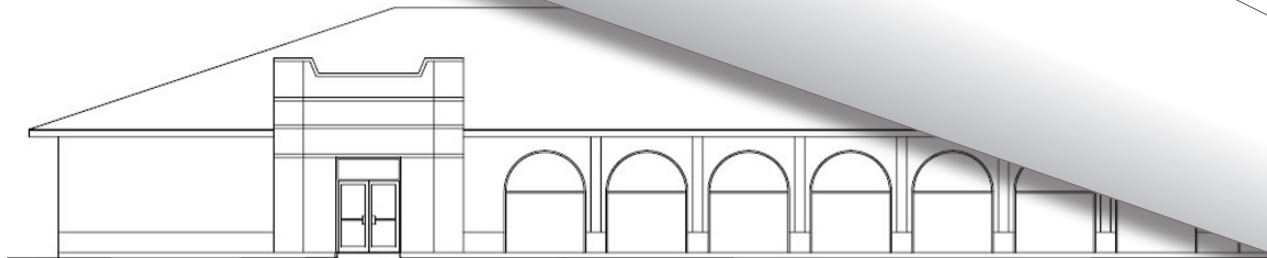
“Without libraries what have we? We have no past and no future.” - Ray Bradbury

Orange Empire Railway Museum's **Library-Archive Building**

“I go into my library and all history unrolls before me.” - Alexander Smith

“There is not such a cradle of democracy upon the earth as the library, this republic of letters, where neither rank, office, nor wealth receives the slightest consideration.”

- Andrew Carnegie



Help us make a central library/archive facility at Orange Empire Railway Museum a reality!

Why build now?

It has been three decades since Museum leadership first envisioned a library facility at OERM. The last generation to witness the golden age of railroading and the major traction systems in Southern California is now concerned with conserving a lifetime of collecting. Let's provide a state-of-the-art facility as an option for perpetuating their work.

How much will the library cost?

Based on our architect's conceptual design, a preliminary budget has been developed. The library and archive will fill an 8400 sq. ft. building that is estimated to cost \$750,000.

Where will the library be located?

Initial discussions have anticipated placement to the north of Carhouse One central to our public area. The site is easily accessible just a short walk from the bottom of the Museum's main entrance ramp.

What can you do?

Your participation in this year-end appeal will help us toward our first year goal of a minimum of \$100,000. This will allow us to complete the engineering and final design and prepare the site for construction. Just fill in the enclosed Annual Appeal Coupon and return it in the envelope provided

Our new library/archive will offer these design features:

- Over 5000 sq. ft. of archive space
- A generous reading room area with capacity for at least 36 school students
- Two spacious secured, observable reference rooms for examining archived materials
- Fire retardant construction with R-40 rated "Rastra" technology
- A temperature and humidity controlled environment
- State-of-the-art security systems

